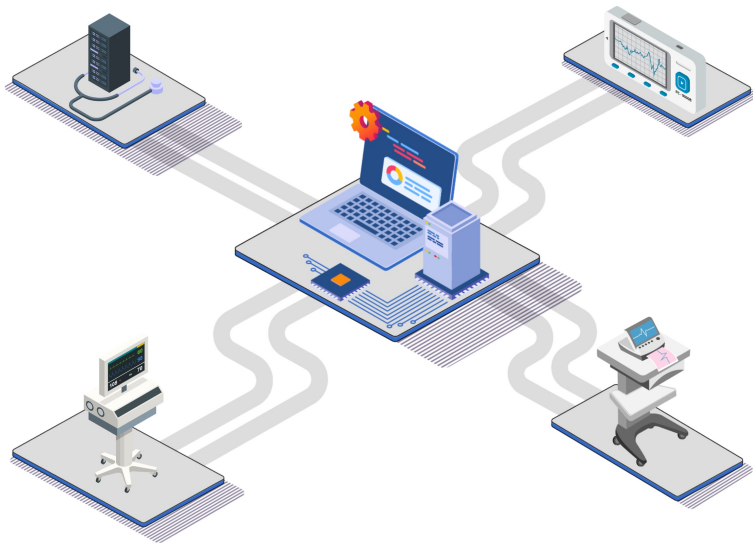


## SUMMARY

The Enterprise Gateway stands at the forefront of healthcare information management, offering a platform that delivers patient data with an emphasis on safety and security from multiple Nihon Kohden devices. Support four key gateway extensions to further utilize your patient data for further insight and specialized care.



## THE PROBLEM



- “Many large hospitals both computerized and paper-based information is insufficiently integrated and secured to fully protect patient records.”\*
- Inefficient and fragmented healthcare information management
- Hospitals rely on many different software and technology products that may struggle to communicate, leading to inefficiencies

## THE SOLUTION



- Integrate data from multiple devices to a centralized network system
- Platform that delivers patient data with a focus on safety and security

## THE RESULT



- Securely connect the patient monitoring network to the centralized hospital network
- Seamless integration and paperless data management from multiple Nihon Kohden devices

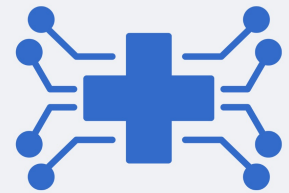
**PHYSICAL**

**VIRTUAL**

Choose a deployment mode that best fits your network



Connect up to 3200\* beds to the centralized network system



Support four key gateway extensions with data from a secure network system

**CONTACT US**  
Nihon Kohden Digital Health Solutions

[nkdhs.com](http://nkdhs.com)

[info@nklab.com](mailto:info@nklab.com)

(949) 474-9207

\*Lederman, R. (2005). Managing hospital databases: Can large hospitals really protect patient data? Health Informatics Journal, 11(3), 201–210.

\*3200 total beds, 1600 Wi-Fi beds, 300 Vitrac, 250 NGNK clients

## SUMMARY

The Enterprise Gateway offers access to various gateway extensions. By providing access to various gateway extensions, the Enterprise Gateway positions Nihon Kohden to deliver advancements in data integration, management, and visualization, tailored to address both technical and clinical requirements of customers in the evolving landscape of healthcare.

### HL7 SERVER EXTENSIONS

Exchange secure patient data between monitoring systems and EMR (Electronic Medical Record)

### TELEMETRY SERVER EXTENSIONS

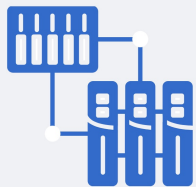
Complete patient data integration from bedside to EMR on hospital Wi-Fi

### ECG SERVER EXTENSIONS

Facilitate efficient ECG work flow integration with diagnostic precision

### PAGER SERVER EXTENSIONS

Enhance patient safety with detailed alarm information sent directly to clinicians



### VMWARE VMOTION

Effortlessly balance resources without impacting virtual machine availability



### FAULT TOLERANCE

Maintain uninterrupted VM Operation with synchronized live shadow instance technology





### HIGH AVAILABILITY

Ensure uninterrupted operation with automated VM restart during host failures

## CONTACT US

Nihon Kohden Digital Health Solutions


[nkdhs.com](http://nkdhs.com)

[info@nklab.com](mailto:info@nklab.com)

 (949) 474-9207